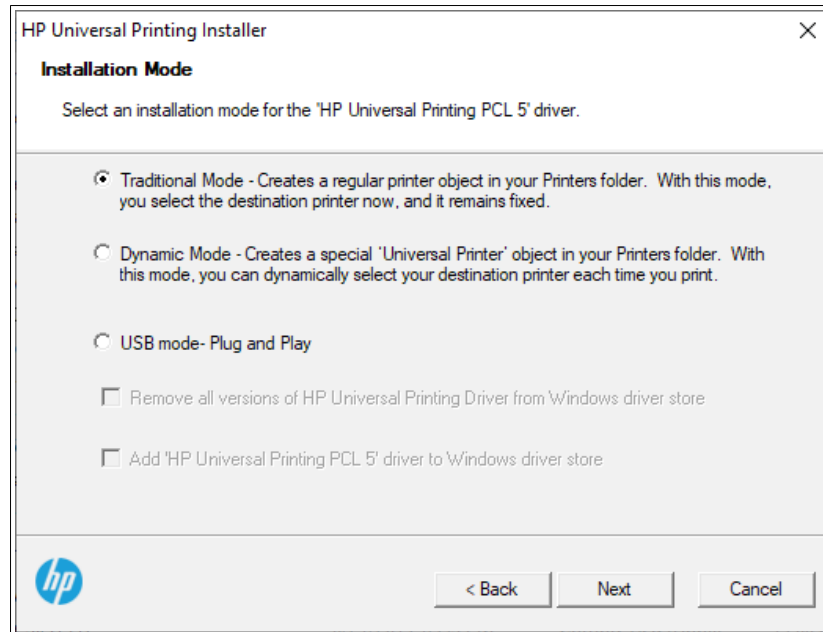
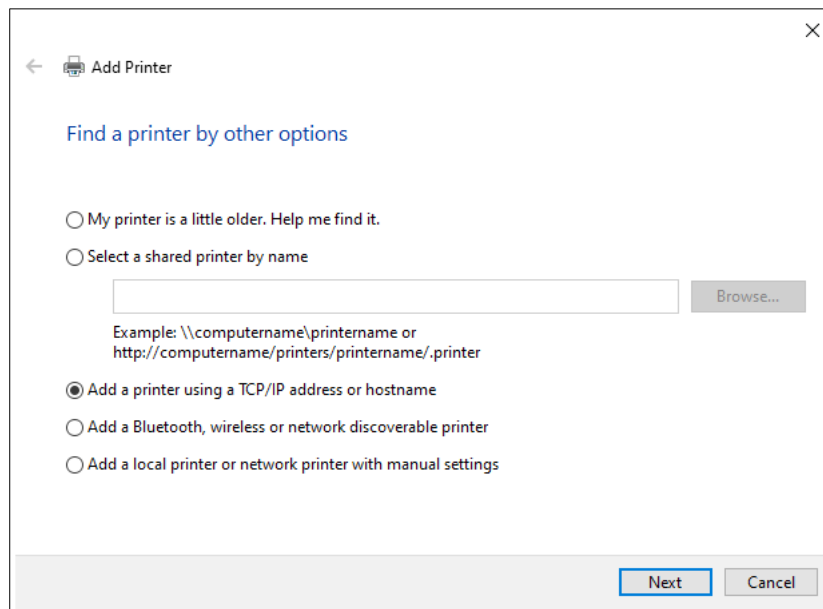


# HP Universal PCL5 Driver Set Up

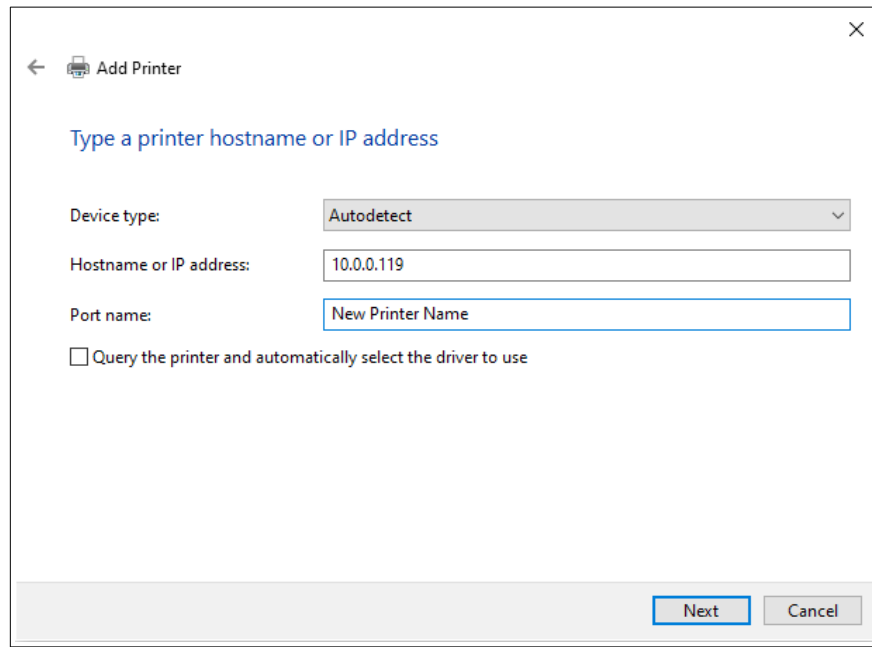
- Make sure that you are using the **latest HP Universal PCL5 driver**
- When download completes, run the .exe file and unzip.
- Select “Traditional Mode” > Next.



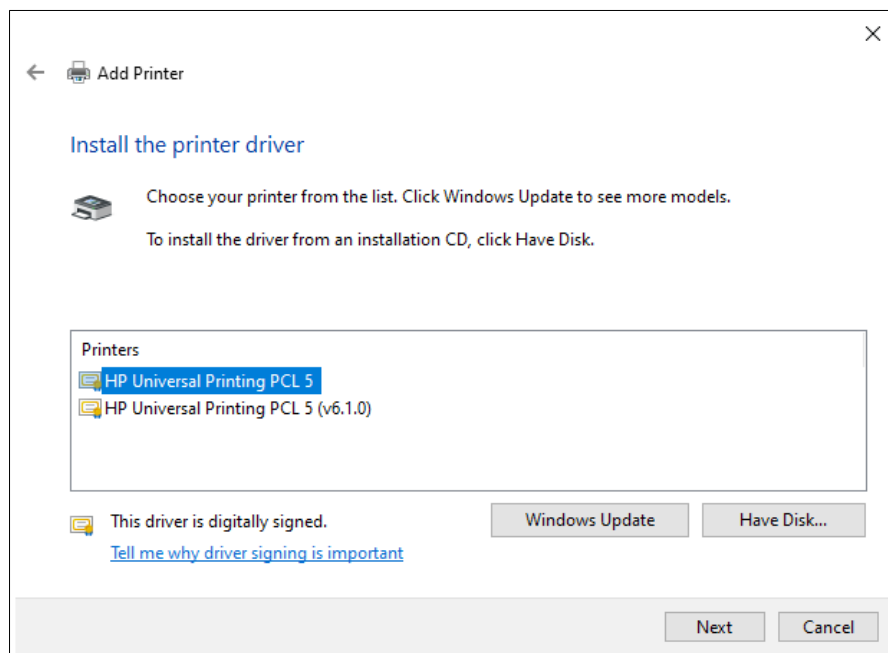
- Select “Add a printer using a TCP/IP address or hostname” > Next.



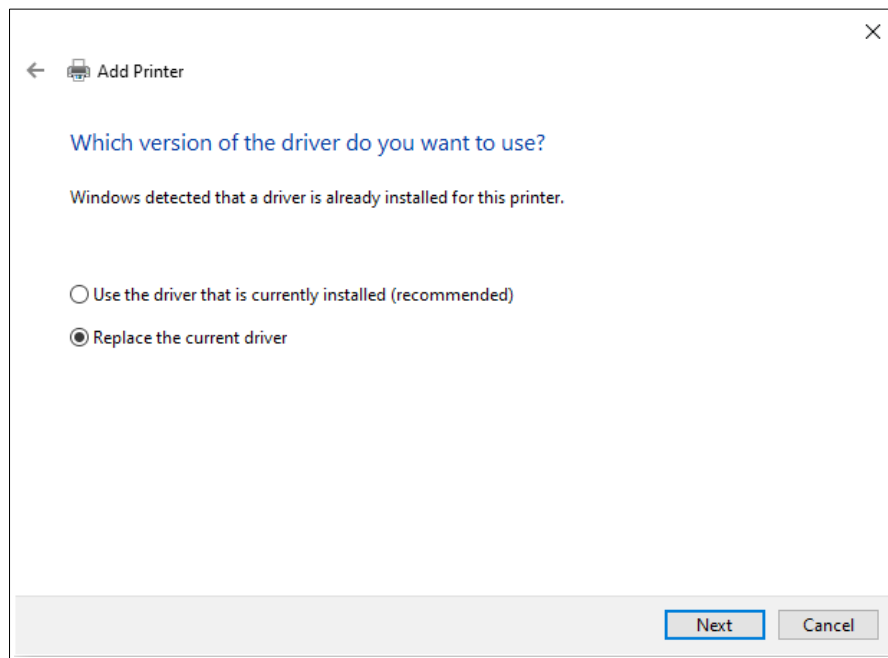
- Specify “Hostname or IP address” by typing the printer’s IP address.
  - Type in the Port Name
  - UNCHECK the box for “Query the printer and automatically select the driver to use”
  - Select “Next”



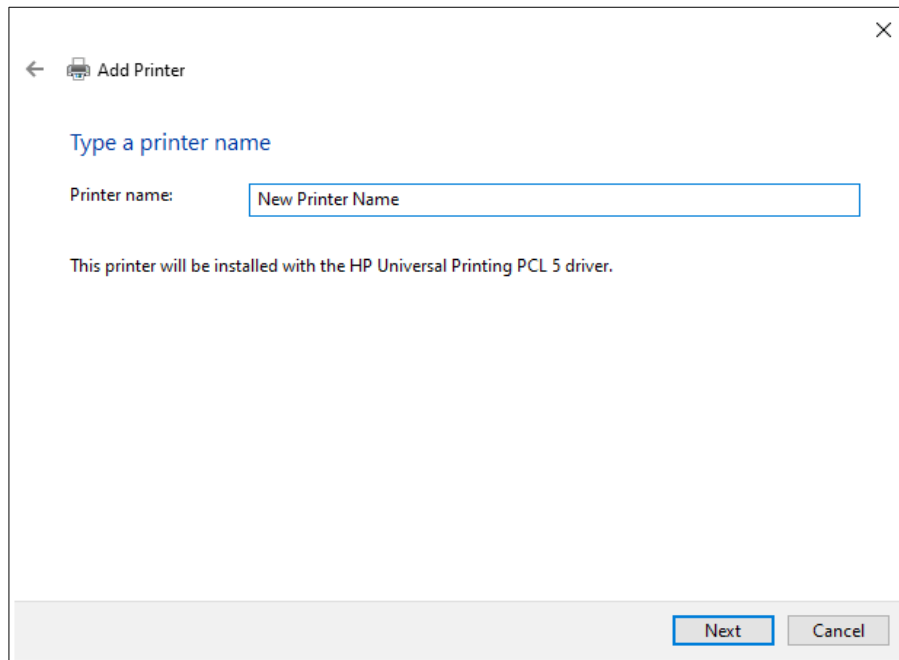
- Select “HP Universal Printing PCL 5” > Next.



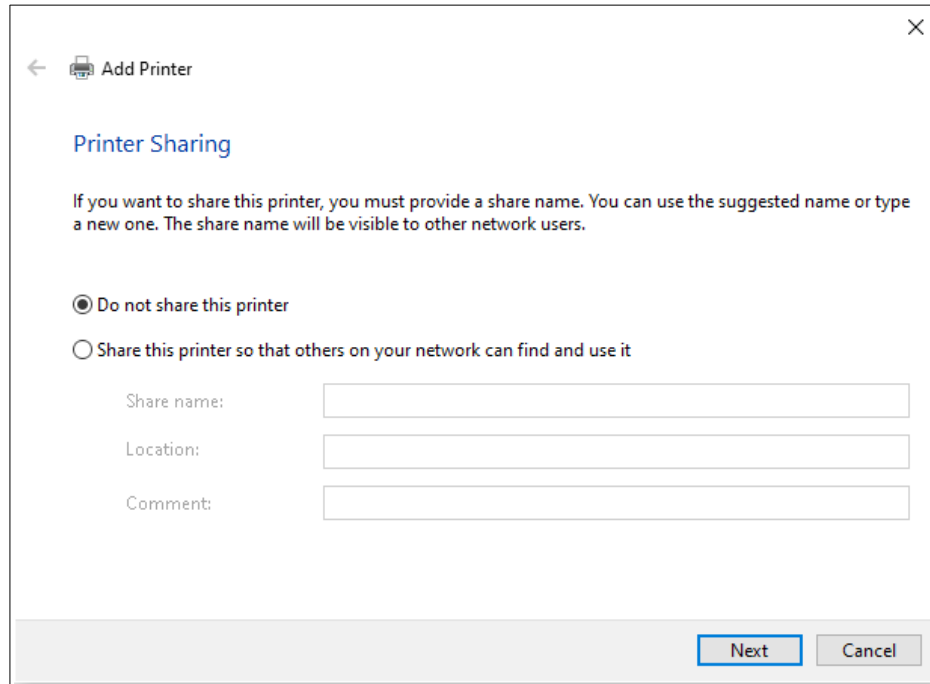
- If you have previously installed the printer, it may ask which driver you'd like to use.
  - Select "Replace the current driver" > Next.



- Type the "Printer Name" > Next.

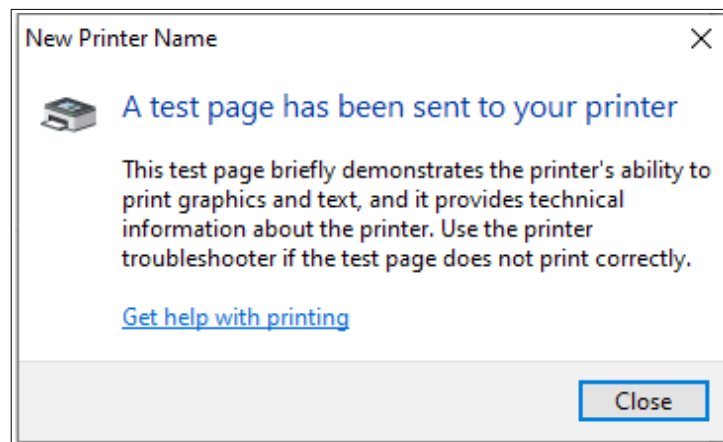
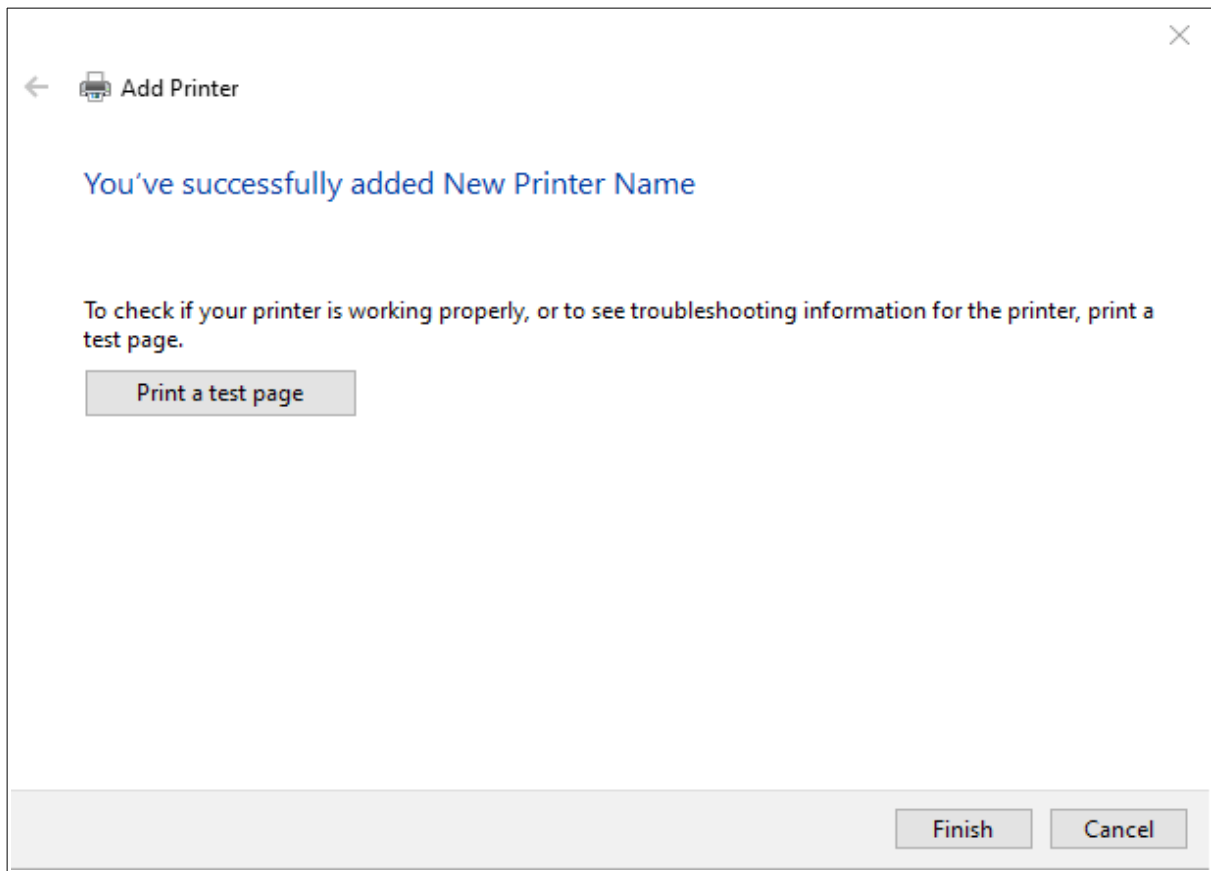


- Optional “Printer Sharing.”
  - Specify if you’d like to share this printer to other network users.
  - Select “Next”



The screenshot shows a Windows dialog box titled "Add Printer" with a printer icon and a back arrow. The main heading is "Printer Sharing". Below this, there is a paragraph of text: "If you want to share this printer, you must provide a share name. You can use the suggested name or type a new one. The share name will be visible to other network users." There are two radio button options: "Do not share this printer" (which is selected) and "Share this printer so that others on your network can find and use it". Below these options are three text input fields labeled "Share name:", "Location:", and "Comment:". At the bottom right of the dialog, there are two buttons: "Next" (which is highlighted with a blue border) and "Cancel".

- You’ll see that you’ve successfully added the printer.
  - Select “Print a test page” if you’d like to test the printer.



- Congratulations! You've successfully set up the PCL 5 printer.

# Tips On The HP Universal PCL5 Driver

- Make sure that you are using the [latest HP Universal PCL5 driver](#)
- If you are using the HP Universal PCL5 driver with Checkjet, and you are not getting your secure resources when printing, it may be necessary to change one of the default settings in the driver. In Devices and Printers, right click on the print queue and select Printing Preferences. Then click the Advanced tab. Under "Document Options->Printer Features" change the "Send True Type As Bitmap" setting to Disabled, then click Apply.

